

ALPINE *ST5000 Outdoor*

Single Temperature Glass Front Merchandiser

ONE MACHINE... MANY POSSIBILITIES

Vend sodas, juices, milk, yogurts, and other foods best served cold from one versatile package.



TIER II



Energy
 Performance
 Rendement
 Énergétique

California
 Energy
 Commission
 Approved

- **Highest energy efficiency** in the industry using only 5.7 Kwh/day
- **New LED lighting** option enhances product presentation, requires no service for a minimum of **5+ years** and reduces lighting energy costs by **40%** over fluorescent equipped models
- **NAMA health safety** on all trays
- **New rigid delivery box** accommodates taller product and includes removable box bottom for easy cleaning
- **High security outdoor package** with impact resistant polycarbonate window cover, rain guards and interlocking door-in-cabinet design



Full Line Vending Products & Services

Dispense a wide variety of foods & beverages.



High Security Package

Impact resistant Lexan window cover, rain guards and anti-pry covers provide superior resistance to the elements, vandals and thieves.



Adjustable Snack & Candy Selections

Configurable to almost any package size in the field with no need for tools
Full selection (5-3/4"W)
3/4 selection (4-5/16"W)
Candy selection (2-7/8"W)



LED Lighting Option

Enhances product presentation promotes more sales.
 No bulb servicing for 5 years.
 Energy efficient and eco friendly.



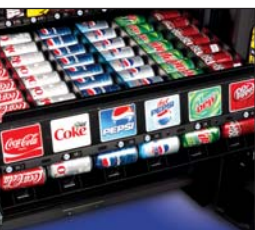
Versatile Steel Beverage Trays Standard

Hold up to 60 canned or bottle beverages



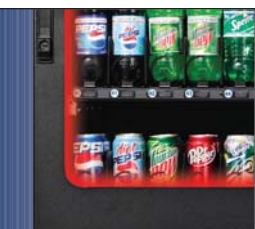
iVend Guaranteed Delivery System

Keeps customers satisfied and reduces service calls for misloaded product.



Optional High Capacity Can Tray

Add 150 can capacity to a single tray with this patented 6 selection option.



Optional Heated Glass

Optimum for use in high humidity locations.



Simple yet full featured interfaces

- Programmable LED display
- Standard peripheral opening for additional payment or POS systems
- Back lighted keypad with Braille identification
- MDB support for all industry standard devices including cash, coin, debit and credit systems
- DEX data output support
- Full featured controller with sales and accounting:
 - Price setting by selection, row or machine
 - Free vend and Combo vend modes
 - Flexible space to selection setting
 - Time of day discounting
 - Time of day shutdown modes for energy savings and secured vend times
 - Programmable point of sale messages
 - Programmable coupon and token values
 - Coin and bill rejection rate counts
 - Accountability display by selection, row or machine
 - Talker device support for sight impaired

Performance

Proven Operating Environment

- High: 100°F (38°C) @ 90% RH

Energy Efficient

- Uses only 5.7 Kwh/day @ 75°F (24°C), 45% RH
- Low-E Glass
- LED lighting
- Efficient insulation of critical food areas without need for entire cabinet refrigeration

10% More Efficient Than Closest Competitor!

U-Select-It

Competitor B

Competitor A



U-Select-It
 8040 University Boulevard
 Des Moines, Iowa 50325
 1-800-247-8709
 Fax: 515-274-0390
 www.uselectit.com

A Wittenn Group Company

Features ST5000 Outdoor

NOTE: Selection capacities and weights vary depending on model configuration.

Selections	Up to 60 Items
Standard Capacity	Varies with configuration
Pricing	Individual from \$0 to \$655.35
Payment Systems	All Industry standard MDB compatible devices
Communication	DEX/UCS
Standard Features	iVend® Delivery Sensors, Triple Pane Argon Filled Door Glass with Low-E Coating
Optional Features	LED lighting, High capacity can tray, Electronic lock, Heated Door Glass, 1/2 HP Compressor for extreme operation

Specifications

Height	72" (183 cm)
Width	41" (104 cm)
Depth	38" (97 cm)
Shipping Weight	975 lbs. (442 kg)
Electrical Services	115 VAC/60Hz, 7.0 Amps (230 VAC/50Hz, 3.5 Amps)
With Heated Glass	115 VAC/60Hz, 8.0 Amps (230 VAC/50Hz, 4.0 Amps)
Refrigeration	Super 1/3 HP, R134a Closed System

In order to bring you the best products possible we continue to improve product design and performance and as such specifications are subject to change without notice.



TIER II California Energy Commission Approved

© 2010 U-Select-It